



**18 The Piece,
Churchdown,
GL3 2EX**

**Ref:
CD23639**

**Price: Offers in the Region
Of £425,000**



Information

Situated on a private road in the heart of CHURCHDOWN VILLAGE, we are delighted to bring to the market this SPACIOUS 2 DOUBLE bedroom DETACHED BUNGALOW that is sold with NO ONWARD CHAIN. Whilst the property is perfectly habitable, it would benefit from some MODERNISATION and IMPROVEMENT. The property further benefits a private rear garden approximately 65ft x 55ft and there is ample parking to the front. An early viewing is advised to avoid missing out.

18 The Piece, Churchdown, GL3 2EX



Description

Entrance Porch

Entrance Hallway

Cloakroom 7' 10" x 3' 10" (2.39m x 1.17m)

Sitting Room 14' 11" x 11' 11" (4.54m x 3.63m)

Dining Room 11' 11" x 11' 0" (3.63m x 3.35m)

Kitchen 10' 11" x 7' 11" (3.32m x 2.41m)

Utility room 8' 6" x 5' 1" (2.59m x 1.55m)

Bedroom 1 12' 11" x 11' 11" (3.93m x 3.63m)

Bedroom 2 12' 11" x 10' 11" (3.93m x 3.32m)

Bathroom 8' 10" x 6' 8" (2.69m x 2.03m)

Outside

Front Garden

Rear Garden

Garage 17' 6" x 10' 1" (5.33m x 3.07m)

Agents Note

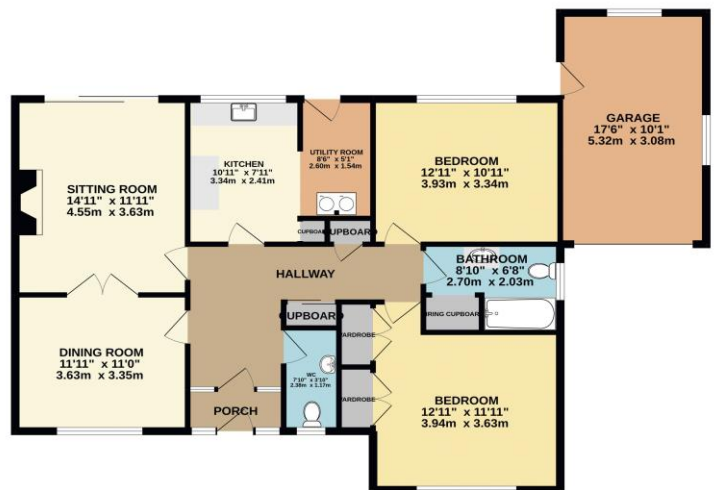
EPC Rating - E

Council Tax Band - E

Summary of accommodation

- DETACHED
- BUNGALOW
- DESIRABLE VILLAGE LOCATION
- 2/3 BEDROOMS
- 1/2 RECEPTIONS
- PRIVATE ROAD
- SCOPE TO IMPROVE/EXTEND
- PRIVATE GARDEN
- NO ONWARD CHAIN

GROUND FLOOR
1172 sq.ft. (108.9 sq.m.) approx.



TOTAL FLOOR AREA: 1172 sq.ft. (108.9 sq.m.) approx.
Whilst every effort has been made to ensure the accuracy of the description contained here, measurements of doors, windows, rooms and any other items are approximate and no responsibility is taken for any error, omission or misstatement. This plan is for illustrative purposes only and should be used as such in any prospective purchase. The services, systems and appliances are used 'as seen' and are not guaranteed to their quality or efficiency can be given.
Made with MapInfo 12.0.02



Farr & Farr Churchdown

Email: churchdown@farr-farr.co.uk

Website: www.farrandfarr.co.uk

Tel: 01452 857421